

Copper tube Type X  
to BS EN 1057 - R250/R290

**LAWTON**  
TABLE X

O.D.	Length	Temper	Wall Thickness	Safe Working Pressure at up to 65°C	O.D.	
					PVC coated (Cold water)	PVC coated (Hot water)
(mm)	(mm)		(mm)	(bar)*	(mm)	(mm)
15	5800	R250	0.7	58.7	15	15
22	5800	R250	0.9	51.2	22	22
28	5800	R250	0.9	39.9	28	28
35	5800	R290	1.2	51.5	35	35
42	5800	R290	1.2	42.6	42	42
54	5800	R290	1.2	33.0	54	54
66.7	5800	R290	1.2	26.6	66.7	
76.1	5800	R290	1.5	29.2	76.1	
108	5800	R290	1.5	20.4		
159	5800	R290	2.0	18.5		
219	5800	R290	3.0	10.0		

Copper tube Type Y  
to BS EN 1057 - R250/R290

**LAWTON**  
TABLE Y

O.D.	Length	Temper	Wall Thickness	Safe Working Pressure at up to 65°C	O.D.	
					PVC coated (Cold water)	PVC coated (Hot water)
(mm)	(mm)		(mm)	(bar)*	(mm)	(mm)
15	5800	R250	1.0	85.7	15	15
22	5800	R250	1.2	69.2	22	22
28	5800	R250	1.2	53.7	28	28
35	5800	R290	1.5	64.9	35	35
42	5800	R290	1.5	53.7	42	42
54	5800	R290	2.0	55.8	54	54
66.7	5800	R290	2.0	44.8	66.7	
76.1	5800	R290	2.0	39.1	76.1	
108	5800	R290	2.5	34.4		

\* 1Bar = 01N/mm<sup>2</sup> = 100Kpa

**LAWTON**  
TUBES

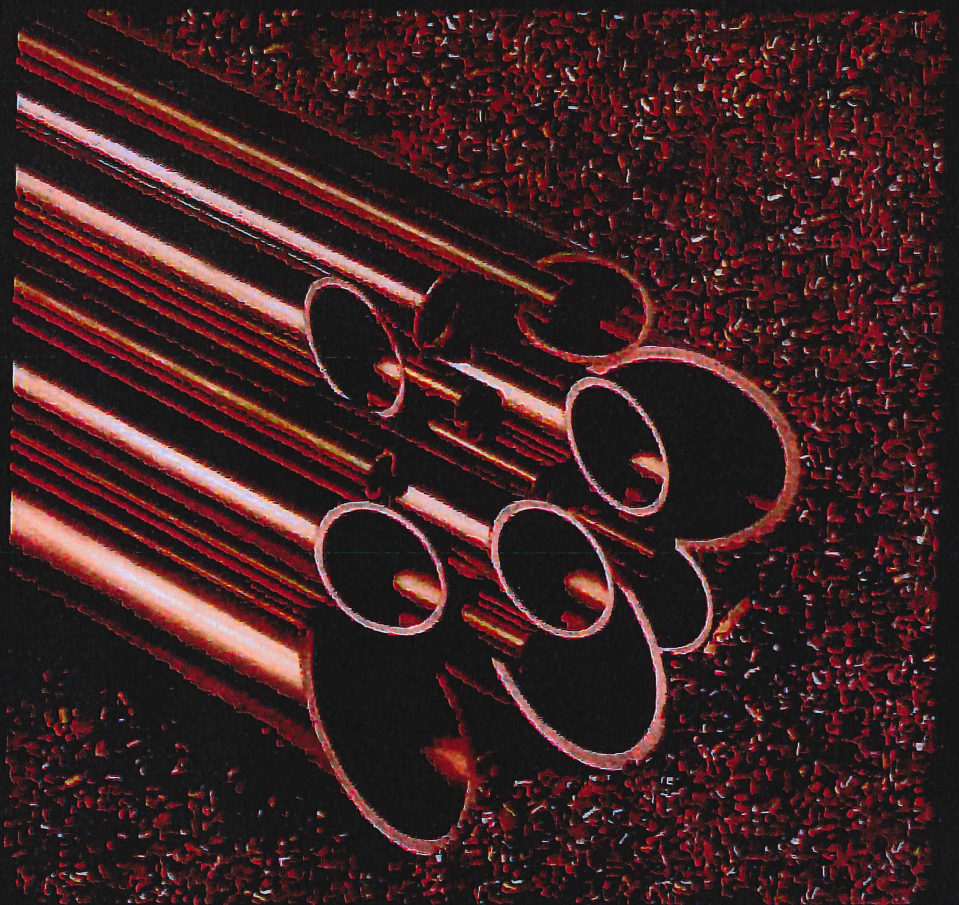
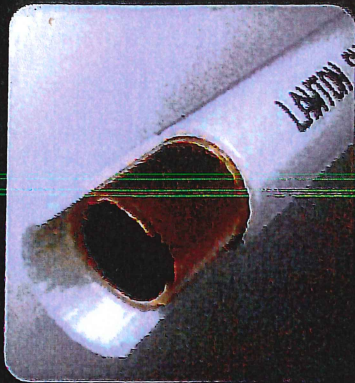
The nations copper specialist

Made in U.K.

# LAWTON

TUBES

*The nations copper specialist*



## Introduction

Lawton Tube Company Limited is the UK's leading independent manufacturer and distributor of copper tube. Established as a Limited Company in 1920 and still family owned!

We form an indispensable link between one of the world's most versatile metals and a wide variety of finished products.

These include tubes, coils, degreased medical fittings, refrigeration fittings and tubes for plumbing, heating, refrigeration and air conditioning systems, electrical bus bars, medical gas installations, automotive braking circuits (copper brake pipe) and a host of other engineering applications.

Copper has a proven performance and provides a cost effective solution to many pipe work and tube requirements on the basis of its inherent properties.

These include:

- High strength and ductility
- Excellent corrosion resistance
- Compatibility with a wide range of fluids
- High thermal and electricity conductivity
- Excellent fabrication and joining properties

With a range of kitemarked products from stock, supported by quality systems audited to bs en iso 9001:2008, we aim to provide you with a first class service at competitive rates.

**WRAS**  
Water Regulations Advisory Scheme



ISO 9001:2008  
FM00451

# WRAS<sup>®</sup>

Water Regulations Advisory Scheme

*This certifies that*

**THE LAWTON TUBE COMPANY LIMITED**

---

*has had the undermentioned product examined, tested and found, when correctly installed, to comply with the requirements of the United Kingdom Water Supply (Water Fittings) Regulations/Scottish Water Byelaws.*

**LTC RANGE OF COPPER END FEED FITTINGS EN 1254 (FOR SOLDERING OR BRAZING) FOR USE WITH KITE MARKED COPPER TUBE TO BS EN1057.**

*This certificate by itself is not evidence of a valid WRAS Approval. Confirmation of the current status of an approval must be obtained from the WRAS Directory ([www.wras.co.uk/directory](http://www.wras.co.uk/directory))*

---

*The product so mentioned will be listed in the Water Fittings and Materials Directory for a period until:*

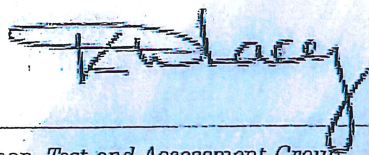
**31 JANUARY 2018**

---

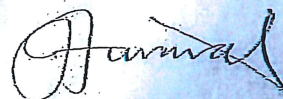
**1301066**

---

*Certificate No.*



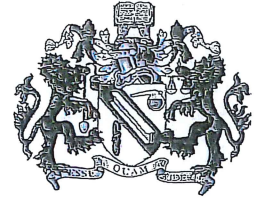
*Chairman, Test and Assessment Group*



*Secretary*

**WRAS**  
APPROVED  
PRODUCT

# bsi.



By Royal Charter

## Certificate of Registration

### QUALITY MANAGEMENT SYSTEM - ISO 9001:2008

This is to certify that:

The Lawton Tube Company Limited  
Torrington Avenue  
Coventry  
CV4 9AB  
United Kingdom

Holds Certificate Number:

FM 00451

and operates a Quality Management System which complies with the requirements of ISO 9001:2008 for the following scope:

**The manufacture of solid drawn copper and copper alloy tubes to national, international standards and customers own specifications. The supply of refrigeration tubes and fittings and medical fittings.**

For and on behalf of BSI:

Pietro Foschi - Strategic Delivery Director

Originally registered: 01/02/1989

Latest Issue: 06/02/2015

Expiry Date: 19/03/2018



Page: 1 of 2

...making excellence a habit.™

This certificate was issued electronically and remains the property of BSI and is bound by the conditions of contract. An electronic certificate can be authenticated [online](#). Printed copies can be validated at [www.bsigroup.com/ClientDirectory](http://www.bsigroup.com/ClientDirectory)

Information and Contact: BSI, Kitemark Court, Davy Avenue, Knowlhill, Milton Keynes MK5 8PP. Tel: + 44 845 080 9000  
BSI Assurance UK Limited, registered in England under number 7805321 at 389 Chiswick High Road, London W4 4AL, UK.  
A Member of the BSI Group of Companies.

Certificate No: FM 00451

Location

Registered Activities

---

The Lawton Tube Company Limited  
Torrington Avenue  
Coventry  
CV4 9AB  
United Kingdom

---

The manufacture of solid drawn copper and copper alloy tubes to national, international standards and customers own specifications. The supply of refrigeration tubes and fittings and medical fittings.

---

The Lawton Tube Company Limited  
T/A Dorset Tube  
Thrush Road  
Parkstone  
Poole  
BH12 4NT  
United Kingdom

---

Manufacture of non-ferrous tube and factoring of special tube.

Originally registered: 01/02/1989

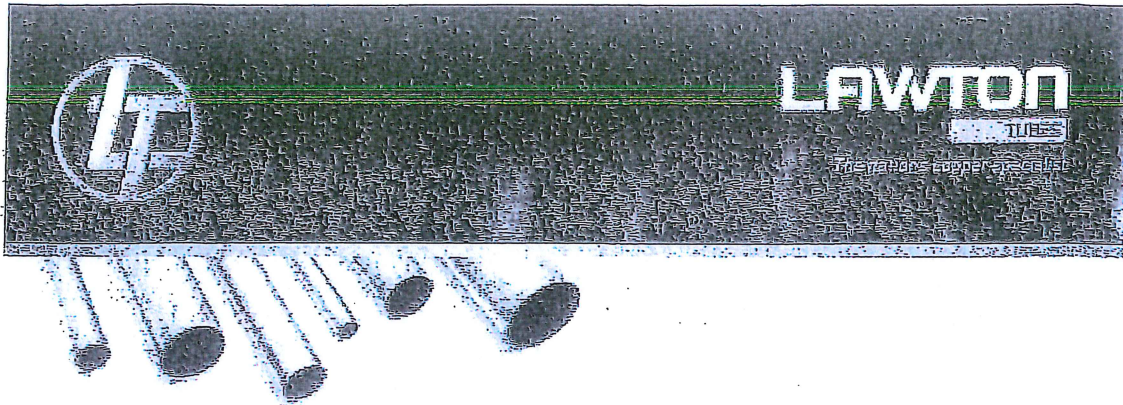
Latest Issue: 06/02/2015

Expiry Date: 19/03/2018

Page: 2 of 2

This certificate was issued electronically and remains the property of BSI and is bound by the conditions of contract.  
An electronic certificate can be authenticated [online](#).  
Printed copies can be validated at [www.bsigroup.com/ClientDirectory](http://www.bsigroup.com/ClientDirectory)

Information and Contact: BSI, Kitemark Court, Davy Avenue, Knowlhill, Milton Keynes MK5 8PP. Tel: + 44 845 080 9000  
BSI Assurance UK Limited, registered in England under number 7805321 at 389 Chiswick High Road, London W4 4AL, UK.  
A Member of the BSI Group of Companies.



### Lawton Tubes - Latest Projects

Below is a confirmed list of projects where Lawton Tubes has supplied its branded products. The list is in no particular order date order and is supplied as a guide only.

1	London 2012 Olympic Stadium & Village	London, UK
2	Harrods	London, UK
3	King Faisal Hospital	Saudi
4	Hammadi Hospital	Saudi
5	Sidra Hospital	Qatar
6	Hamad Medical City	Qatar
7	Cleveland Clinic	Dubai
8	Al Qassimi Maternity Hospital extension	Dubai
9	Dubai Airport Clinic	Dubai
10	Masfout Hospital	Ajman
11	Oasis Hospital	Al Ain
12	Arzanah Medical Complex	Abu Dhabi
13	Abu Al Abid	Abu Dhabi
14	Zayed University	Abu Dhabi
15	Zayed Herbal Complex	Abu Dhabi
16	USA Air Force base, Camp Eggers	Afghanistan
17	Jaber al Ahmed Al Jaber Al Sabah Hospital	Kuwait
18	KKM (Ministry of Health)	Malaysia
19	JKR (Public Works Department)	Malaysia
20	Square Hospital	Bangladesh
21	The Savoy	London, UK
22	The Shard (soon to be the tallest building in England)	London, UK
23	Southerbys	London, UK
24	The Grosvenor House Hotel	London, UK
25	Big Brother House	London, UK
26	Etihad's new offices at Manchester Airport	Manchester, UK
27	Edinburgh International Conference Centre	Scotland
28	Sheraton Hotel (5 Star - Edinburgh)	Scotland
29	Old Course Hotel - St Andrews	Scotland
30	Ng Teng Fong General Hospital	Singapore

Source : [www.lawtontubes.com/en/latest-projects](http://www.lawtontubes.com/en/latest-projects)