



JIS PRESSURE PIPE & FITTING SERIES



an *Aliaxis* company



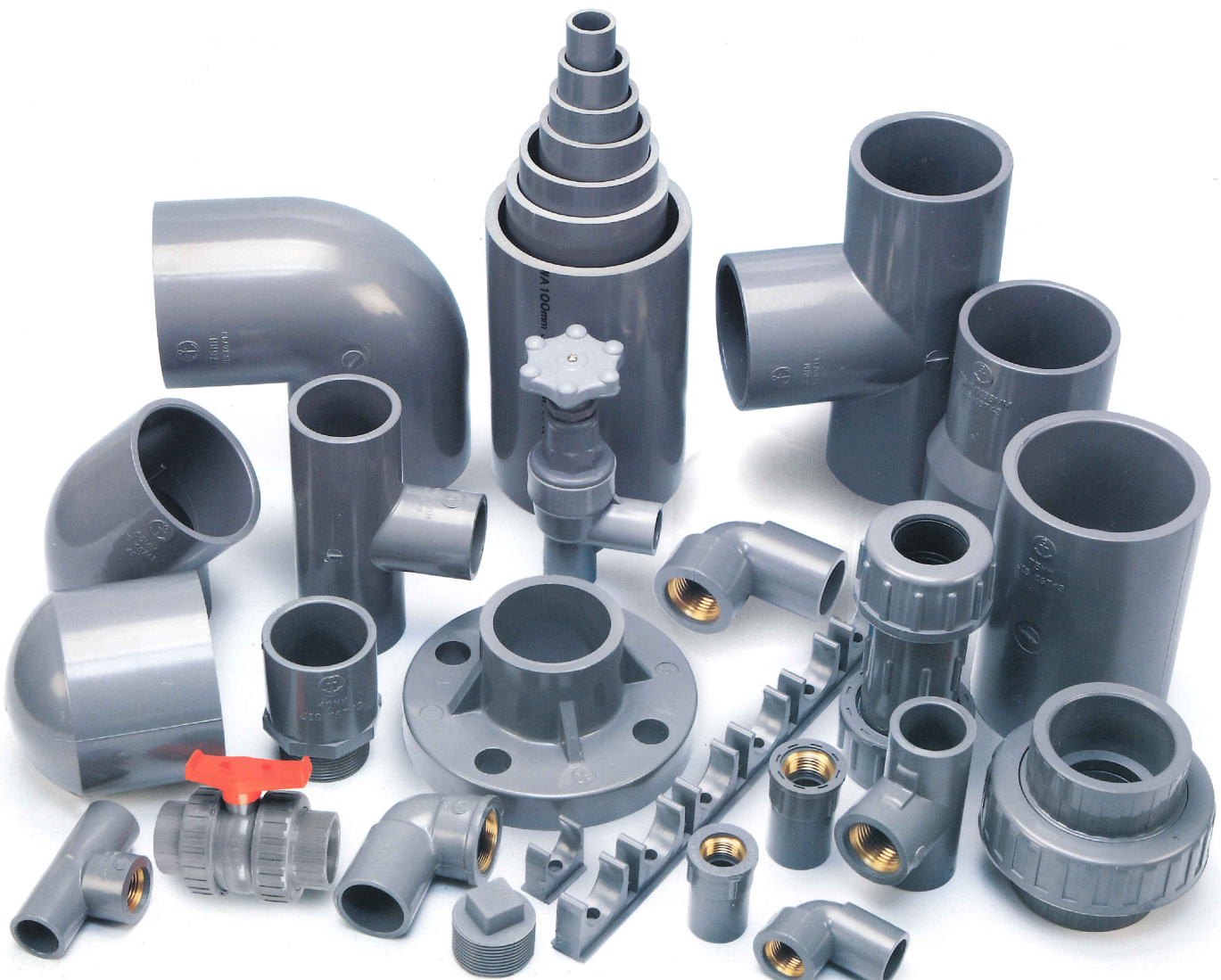
UPVC

JIS PRESSURE PIPE & FITTING SERIES

EXECUTIVE STANDARDS

PIPE: JISK 6742

FITTING: JISK 6743





The UNIVERSAL
Hardware & Plastic Factory Limited(since 1961)

Company profile

The Universal Hardware & Plastic Factory Ltd has been engaging in plastic pipe and fitting production business since 1961, is a member of world-reknewed plastic pipe manufacture corporation "Aliaxis". Our company's production center is located in Dongfeng Town, Zhongshan City, Guandong Province.

Currently, Aliaxis headquarter is located in Brussels, Belgium, Europe. It is the world's largest plastic pipe / valve manufacturing and wholesales company, with more than 400 well-known brands and manufacturers over the world, and with an annual sales more than 40 billion RMB.

We have established a well-organized international management system. With excellent craftsmanship, we provide full and complete range of best quality products to different sectors like, residential and commercial buildings, industrial application, civil works, etc. We produce varieties of plastic pipes, fittings and valves making from different materials including CPVC, UPVC, PP-R, PP, EVA etc. Our products can be complied to different countries' standards, GB, BS, JIS, ASTM etc. which enable our products to switch in different market in the world.

Our company is always close to the trend of the times and the pulse of the market. At the same time, we continue to improve and enhance the technology of production and R&D level, so that we can always stand in the forefront of the market.

With a strong technical team, adhere to independent research and development, innovation strategy and proprietary technology, we were invited to be a core member of the National Plastic Products Standardization Technical Committee - Plastic pipe, Fittings and Valves Division, to participate in the relevant national standards formulation in China.

We have an advanced mould development center and have produced over thousand sets of high quality mould which cover whole range of water supply/pressure pipe system. We have trained up a professional sales team and technicians. Our team members are willing to listen the needs of every client, provide professional advice and product knowledge to each customer, to help them to choose the right products and provide the highest level of after sales services.

Through our good company culture, well-organized wholesale distribution network and professional sales team, strong product development, The Universal Hardware & Plastic Factory Ltd establishes a global brand "ANCHOR". ANCHOR is dedicated to serve the public.



The UNIVERSAL Hardware & Plastic Factory Limited(since 1961)

Anchor brand UPVC Japanese Standards pipe system:

Executive Standards: JIS K6742 JIS K6743

Nominal Size: 16mm-300mm

Pressure Rating: 10kg/cm², 12kg/cm², 15kg/cm², 18kg/cm²

Anchor brand UPVC Japanese Standards pipe system characteristics:

1. JIS pipe system is manufactured as complied to Japanese Standards (JIS K6742, JIS K6743).
2. JIS pipe fittings provide deeper socket depth than other standards' fittings, which reinforce the connection strength between pipe and fitting.
3. JIS pipe system can convey different medium, e.g. fresh water, industrial chemicals, etc. at servicing temperature $\pm 45^{\circ}\text{C}$.
4. Excellent resistance to varieties of chemical.
5. JIS pipe is an appropriate choice for water treatment, irrigation, and all kinds of cold water supply and drainage system.



UPVC Pipe size as following:

General Specifications				
Nominal size	Outside Diameter(mm)		Wall Thickness(mm)	
	O.D.	Tolerance	Min	Tolerance
16	22	± 0.2	2.7	± 0.6
20	26	± 0.2	2.7	± 0.6
25	32	± 0.2	3.2	± 0.6
30	38	± 0.2	3.2	± 0.6
40	48	± 0.2	3.7	± 0.6
50	60	± 0.2	4.1	± 0.8
65	76	± 0.2	4.1	± 0.8
75	89	± 0.2	5.5	± 0.8
100	114	± 0.2	6.6	± 1.0
150	165	± 0.3	9.0	± 1.3
200	216	± 0.7	10.3	± 1.4
250	267	± 0.9	12.7	± 1.8
300	318	± 1.0	15.1	± 2.2

Working Pressure: DN16-DN40: 18kg/cm² DN50-DN100: 15kg/cm² DN150-DN300: 12kg/cm²

Mechanical properties	
Tensile strength	52MPa(7,500pound/inch ²)
Pressure strength	66MPa(9,600pound/inch ²)
Impact resistance test	5.4Joule(4feet/pound)
Elastic modulus	2,750MPa(4105 pound/inch ²)
Bier Nuo hardness	12-15

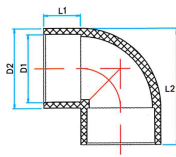
Physical properties	
Proportion	1.4g/cm ³
Inflammability	Not support combustion
Opacity	Less than 0.1%
Vicat softening temperature /°C	81°C
Water absorption	0.12 (24hour)

Electrical performance	
Through voltage	2,000V/Mil (within 10mil thickness)
Volume resistivity	1015Ω/cm
Surface resistance	1013-1014Ω
Power factor	0.02 (106 week)
Constant	3.0-3.2 (106 week)

Heat transfer	
Coefficient of thermal expansion	0.0675Mm/Meter/°C
Thermal conductivity	3.510-4Cal./S/cm ² /°C
Specific heat	0.25Cal./°C/g

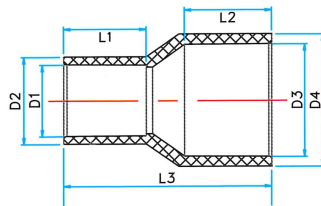
NOTE: The physical characteristic of JIS pipe and fittings are tested in comply with BS 3505 (pipe) and BS 4346 (fitting).

JIS PRESSURE PIPE & FITTING SERIES



Elbow 90°

Nom. Size	Product Code	D1	D2	L1	L2
13	151	18.40	24.00	26.30	48.80
16	152	22.40	28.80	31.50	58.40
20	153	26.45	32.85	35.90	67.30
25	154	32.55	39.75	41.00	80.30
30	155	38.60	45.80	43.50	91.10
40	156	48.70	56.90	56.30	111.10
50	157	60.80	69.80	64.40	132.10
65	158	76.80	86.80	67.90	154.66
75	159	89.60	104.60	73.00	172.40
100	160	114.70	133.50	84.80	219.00
150	161	166.00	190.40	131.80	318.90
200	162	217.00	240.75	138.80	368.00
250	163 *	268.00	391.90	143.90	429.00
300	164 *	319.00	344.60	158.40	545.00

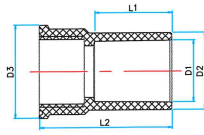


Reducer

Nom. Size	Product Code	D1	D2	D3	D4	L1	L2	L3
20x16	352	22.40	28.80	26.45	32.85	30.10	35.10	73.60
25x16	353	22.40	28.80	32.55	39.75	30.40	41.00	79.30
25x20	354	26.45	32.85	32.55	39.75	35.20	40.70	82.10
30x16	355	22.40	28.80	38.60	45.80	31.20	45.00	83.80
30x20	356	26.45	32.85	38.60	45.80	35.30	44.90	87.76
30x25	357	32.55	39.75	38.60	45.80	39.70	45.80	93.10
40x16	358	22.40	28.80	48.70	56.90	30.30	55.10	103.40
40x20	359	26.45	32.85	48.70	56.90	35.00	55.30	104.80
40x25	360	32.55	39.75	48.70	56.90	40.70	56.10	106.90
40x30	361	38.60	45.80	48.70	56.90	43.30	55.50	105.50
50x16	362	22.40	28.80	60.80	69.80	30.30	63.60	118.90
50x20	363	26.45	32.85	60.80	69.80	34.80	63.80	119.86
50x25	364	32.55	39.75	60.80	69.80	40.50	64.30	122.10
50x30	365	38.60	45.80	60.80	69.80	44.60	64.50	122.60
50x40	366	48.70	56.90	60.80	69.80	55.00	63.70	128.10
65x50	367	60.80	69.80	76.80	86.80	63.30	69.70	153.60
75x50	369	48.70	56.90	89.60	104.64	64.10	64.90	161.50
75x65	370	60.80	69.80	89.60	104.64	63.10	70.50	160.60
100x50	371	60.80	69.80	114.70	133.50	64.40	91.40	191.70
100x75	373	89.60	104.64	114.70	133.50	74.00	88.90	190.10
150x100	374	114.70	133.50	166.00	190.40	58.30	130.80	294.36
200x150	375	166.00	192.40	217.00	240.00	133.00	136.30	308.40

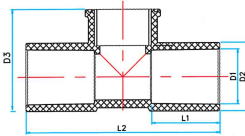


The UNIVERSAL Hardware & Plastic Factory Limited(since 1961)



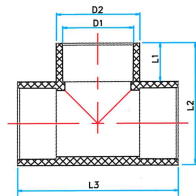
Faucet Socket (With Brass Thread)

Nom. Size	Product Code	D1	D2	D3	L1	L2
16x1/2"	502Cu	22.40	28.80	35.00	30.40	52.26
20x3/4"	503Cu	26.45	32.85	43.80	34.40	59.30
25x1"	504Cu	32.55	39.75	52.20	39.80	66.90
20x1/2"	503ACu	26.45	33.80	43.50	34.72	59.24
25x1/2"	504ACu	32.55	40.54	52.00	39.80	67.30
25x3/4"	504BCu	32.55	40.60	52.20	40.00	67.40



Faucet Tee 90° (With Brass Thread)

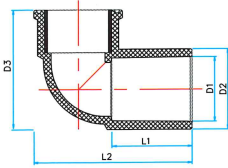
Nom. Size	Product Code	D1	D2	L1	L2	L3
16x1/2"	452Cu	22.40	28.80	49.20	30.40	82.90
20x3/4"	453Cu	26.45	32.85	54.90	35.80	103.66
20x1/2"	454ACu	26.45	32.85	51.20	35.20	94.10
25x1/2"	454BCu	32.55	39.75	57.50	40.30	102.80
25X1"	454Cu	32.55	39.75	65.30	40.50	120.80
25X3/4"	455Cu	32.55	39.75	59.96	40.70	115.50



Equal Tee

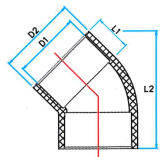
Nom. Size	Product Code	D1	D2	L1	L2	L3
16	202	22.40	28.80	30.20	57.00	83.90
20	203	26.45	32.85	34.90	67.30	100.36
25	204	32.55	39.75	40.10	79.30	115.90
30	205	38.60	45.80	45.30	88.96	130.38
40	206	48.70	56.90	56.00	114.40	163.80
50	207	60.80	69.80	64.10	131.50	192.20
65	208	76.80	86.80	64.30	153.30	216.10
75	209	89.60	104.60	67.50	165.00	227.56
100	210	114.70	133.50	85.60	219.30	303.50
150	211	166.00	190.40	131.70	330.00	463.50
200	212 A	217.00	238.70	138.00	372.60	504.00
250	213 *	268.00	292.30	158.90	457.80	596.00
300	215 *	319.00	343.20	178.70	525.00	691.00

JIS PRESSURE PIPE & FITTING SERIES



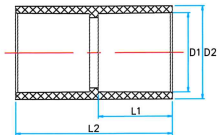
**Faucet Elbow 90°
(With Brass Thread)**

Nom. Size	Product Code	D1	D2	L1	L2	L3
16x1/2"	402Cu	22.40	28.80	48.26	30.50	60.90
20x3/4"	403Cu	26.45	32.85	54.30	36.40	71.96
25x1"	404Cu	32.55	39.75	61.26	40.20	83.50
20x1/2"	413ACu	26.45	33.80	53.80	36.00	71.30



Elbow 45°

Nom. Size	Product Code	D1	D2	L1	L2
16	185	22.40	28.80	22.70	65.00
20	186	26.45	32.85	25.90	77.66
30	188	38.60	45.80	26.50	86.10
40	189	48.70	56.90	56.30	149.00
50	190	60.80	69.80	64.10	172.20
65	191	76.80	86.80	45.50	147.70
75	192	89.60	104.60	73.10	216.00
100	193	114.70	133.50	85.80	261.00
150	194	166.00	192.20	134.00	364.70
200	195	217.00	240.50	138.70	412.20

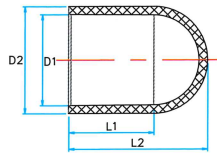


Coupling

Nom. Size	Product Code	D1	D2	L1	L2
13	301	18.40	24.00	25.70	53.00
16	302	22.40	28.80	30.80	64.00
20	303	26.45	32.85	35.40	73.80
25	304	32.55	39.75	40.40	84.60
30	305	38.60	45.80	43.40	90.40
40	306	48.70	56.90	55.80	116.30
50	307	60.80	69.80	63.60	129.60
65	308	76.80	86.80	63.00	131.10
75	309	89.60	104.60	74.00	152.50
100	310	114.70	133.50	84.50	172.40
150	311	166.00	190.40	133.10	270.86
200	312A	217.00	235.50	134.40	276.10
250	313 *	268.00	291.40	158.30	327.40

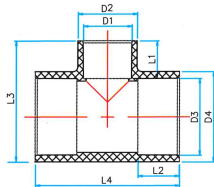


The UNIVERSAL Hardware & Plastic Factory Limited(since 1961)



Cap

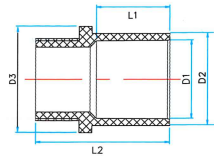
Nom. Size	Product Code	D1	D2	L1	L2
16	102	22.40	28.80	30.00	40.00
20	103	26.45	32.85	35.50	46.20
25	104	32.55	39.75	40.10	53.50
30	105	38.60	45.80	47.00	61.50
40	106	48.70	56.90	57.20	73.00
50	107	60.80	69.80	64.30	83.80
65	108	76.80	86.80	67.30	97.40
75	109	89.60	104.60	71.80	104.30
100	110	114.70	133.50	89.30	136.00
150	111	166.00	190.40	135.30	214.10



Reducing Tee

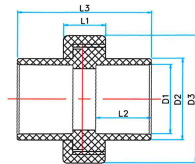
Nom. Size	Product Code	D1	D2	D3	D4	D5	L1	L2	L3
16x13	251	18.40	24.00	22.40	29.00	27.20	30.70	53.00	82.30
20x16	252	22.40	28.80	26.45	32.85	31.20	36.60	62.30	96.30
25x16	253	22.40	28.80	32.55	39.75	30.10	41.10	70.20	106.20
25x20	254	26.45	32.85	32.55	39.75	35.00	42.00	73.70	110.20
30x16	255	22.40	28.80	38.60	45.80	30.80	44.90	76.16	113.90
30x20	256	26.45	32.85	38.60	45.80	36.00	45.10	80.20	117.50
30x25	257	32.55	39.75	38.60	45.80	41.10	45.40	84.46	124.36
40x16	258	22.40	28.80	48.70	56.90	31.20	56.30	85.36	136.20
40x20	259	26.45	32.85	48.70	56.90	30.60	56.40	91.00	140.00
40x25	260	32.55	39.75	48.70	56.90	41.30	56.40	96.20	146.50
40x30	261	38.60	45.80	48.70	56.90	40.60	56.20	100.40	152.30
50x16	262	22.40	28.80	60.80	69.80	30.80	64.30	98.20	152.16
50x20	263	26.45	32.85	60.80	69.80	38.10	64.50	103.80	156.20
50x25	264	32.55	39.75	60.80	69.80	41.80	63.80	109.00	162.00
50x30	265	38.60	45.80	60.80	69.80	45.00	63.80	113.30	168.20
50x40	266	48.70	56.90	60.80	69.80	55.90	64.00	123.00	179.80
65x50	267	60.80	69.80	76.80	86.80	62.60	63.20	148.00	204.16
75x25	267A	32.55	39.75	89.60	104.64	42.00	65.80	145.46	187.50
75x40	268	48.70	56.90	89.60	104.64	56.40	65.30	154.50	190.80
75x50	269	60.80	69.80	89.60	104.64	64.40	65.60	163.20	212.06
100x50	271	60.80	69.80	114.70	133.50	63.60	85.00	194.30	256.46
100x75	273	89.60	104.64	114.70	133.50	65.90	85.10	198.70	279.50
150x50	273B	60.80	74.80	166.00	192.00	64.40	132.50	249.60	364.00
150x75	273A	89.60	105.50	166.00	191.80	65.00	132.00	241.50	364.40
150x100	274	114.70	133.50	166.00	190.40	84.30	132.30	276.00	417.00
200x150	275A	166.00	192.20	217.00	240.50	133.00	202.00	376.90	452.70

JIS PRESSURE PIPE & FITTING SERIES



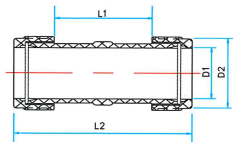
BSPT Male Coupling

Nom. Size	Product Code	D1	D2	D3	L1	L2
16x1/2"	552	22.40	28.80	29.06	32.20	54.16
20x3/4"	553	26.45	32.85	34.30	35.80	61.40
25x1"	554	32.55	39.75	40.00	40.40	69.60
30x1-1/4"	555	38.60	45.80	46.20	46.50	73.60
40x1-1/2"	556	48.70	56.90	57.60	55.10	85.48
50x2"	557	60.80	69.80	71.30	63.20	99.66
65x2-1/2"	558	76.80	86.80	86.80	71.10	116.96
75x3"	559	89.60	104.60	102.00	76.10	127.10
100x4"	560	114.70	133.50	128.66	91.10	154.28
150x6"	561	166.00	190.40	190.86	135.00	222.10



Union

Nom. Size	Product Code	D1	D2	D3	L1	L2	L3
16	902	22.40	31.20	50.00	23.00	23.30	57.90
20	903	26.45	36.70	59.00	26.00	26.10	60.50
25	904	32.55	44.80	68.00	28.00	29.20	71.60
30	905	38.60	52.80	83.00	32.00	32.00	85.80
40	906	48.70	64.20	93.00	35.00	35.00	88.30
50	907	60.80	77.40	114.00	38.00	39.30	100.00
65	908	76.80	91.30	137.30	38.20	44.60	114.80
75	909	89.60	106.50	158.00	83.00	47.60	126.50



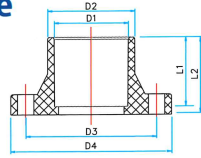
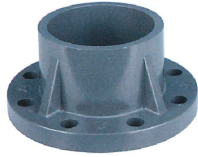
Flexible Joint

Nom. Size	Product Code	D1	D2	L1	L2
16	912	22.30	46.70	59.00	121.00
20	913	26.30	53.10	63.00	124.50
25	914	32.40	60.50	65.00	136.30
30	915	38.50	69.20	74.00	151.50
40	916	48.80	79.40	81.00	160.80
50	917	61.50	92.70	88.00	179.60
65	918	77.80	112.70	112.00	212.00
75	919	91.00	135.00	152.60	261.60

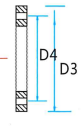
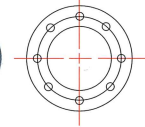
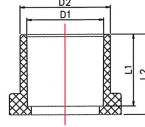


The UNIVERSAL Hardware & Plastic Factory Limited (since 1961)

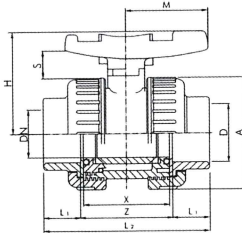
One Piece Flange



Two Pieces Flange



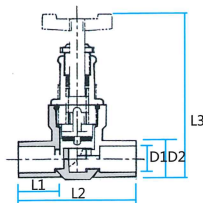
Nom. Size	Product Code	D1	D2	D3	D4	L1	L2
				c/c distance of hole hole nos.			
16	732A Two Pieces	22.40	29.00	65.00	4	95.00	22.60
20	733A Two Pieces	26.45	34.70	75.00	4	105.00	25.70
25	734A Two Pieces	32.55	39.75	85.00	4	127.25	54.30
25	734	32.55	39.75	90.00	4	115.00	28.70
30	735	38.60	45.80	100.00	4	135.70	59.30
40	736	48.70	56.90	105.00	4	141.10	57.90
50	737	60.80	69.80	120.00	4	155.85	64.00
65	738	76.80	86.80	140.00	4	176.25	64.40
75	739	104.60	89.60	150.00	8	185.40	69.10
100	740	114.70	133.50	175.00	8	211.15	87.20
150	741	190.40	166.00	240.00	8	282.80	129.50
200	742A Two Pieces	217.00	239.30	290.00	12	339.00	135.90
250	743	268.00	293.60	355.00	12	398.80	160.90
300	744	319.00	344.50	400.00	16	443.40	180.40



Ball Valve

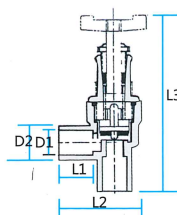
Double union end connection, with safe block, JIS solvent cementing socket

Nom. Size (mm)	D	DN	A	H	M	S	X	PN@20°C bar	L1	Z	L2	Weight g
1/2"	22.40	15	50	53	49	17	48	16	23	59	107	130
3/4"	26.45	20	59	55	45	18	51	16	26	58	110	210
1"	32.55	25	68	68	50	24	64	16	28	73	130	305
1 1/4"	38.60	32	83	75	57	23	64	16	32	79	145	450
1 1/2"	48.70	40	93	84	60	26	75	16	35	90	162	695
2"	60.80	50	114	97	68	28	80	16	38	98	176	1200
2 1/2"	76.80	65	142	118	82	31	115	10	63	139	264	2190
3"	89.60	80	158	123	95	33	130	10	63	151	280	3360
4"	114.70	100	210	153	107	38	157	10	83	154	348	6060



Stop Valve

Nom. Size	Product Code	D1	D2	L1	L2	L3
16	602A	22.40	29.90	31.30	100.20	136.30
20	603	26.45	36.30	38.00	120.70	137.90



Gate Valve

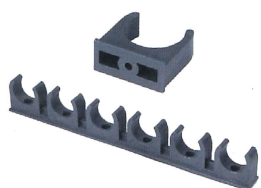
Nom. Size	Product Code	D1	D2	L1	L2	L3
16	604	22.40	30.30	32.00	73.80	159.70

JIS PRESSURE PIPE & FITTING SERIES



Pipe Bracket

Product Code	2100	2101	2102	2103	2104	2105	2106	2107
Nom. Size(mm)	1"	1-1/4"	1-1/2"	2"	2-1/2"	3"	4"	6"
handle length	3"	4"	4"	4"	4" 5" 6"	4" 5" 6"	4" 5" 6"	4" 5" 6"



Pipe Clip

Product Code	1001	1002	1003	1001-6	1002-6	1003-6
Nom. Size(mm)	16	20	25	16	20	25



Flange Gasket

Product Code	D0003-B	D0004-B	D0005-B	D0007-B	D0008-B	D0009-B	D0010-B
Nom. Size(mm)	50	65	75	150	200	250	300



Flange Gasket

Product Code	D0737	D0739	D0740	D0741	D0742	D0743	D0744
Nom. Size(mm)	50	75	100	150	200	250	300



Solvent Cement (for PVC)

Product Code	S100	S500			
Nom. Size(g)	100	500			

Aliaxis



世界五金塑膠廠有限公司

The **UNIVERSAL** Hardware & Plastic Factory Limited (since 1961)
 香港九龍彌敦道430-436號彌敦商務大廈22樓A&D室
 Unit A&D, 22/F, Nathan Commercial Building, No. 430-436 Nathan Road, Kln. H.K.
 Tel: (852) 23322878, 27820998 Fax: (852) 27822882
 Web Page: <http://www.anchorhk.com> E-mail: universa@hkstar.com